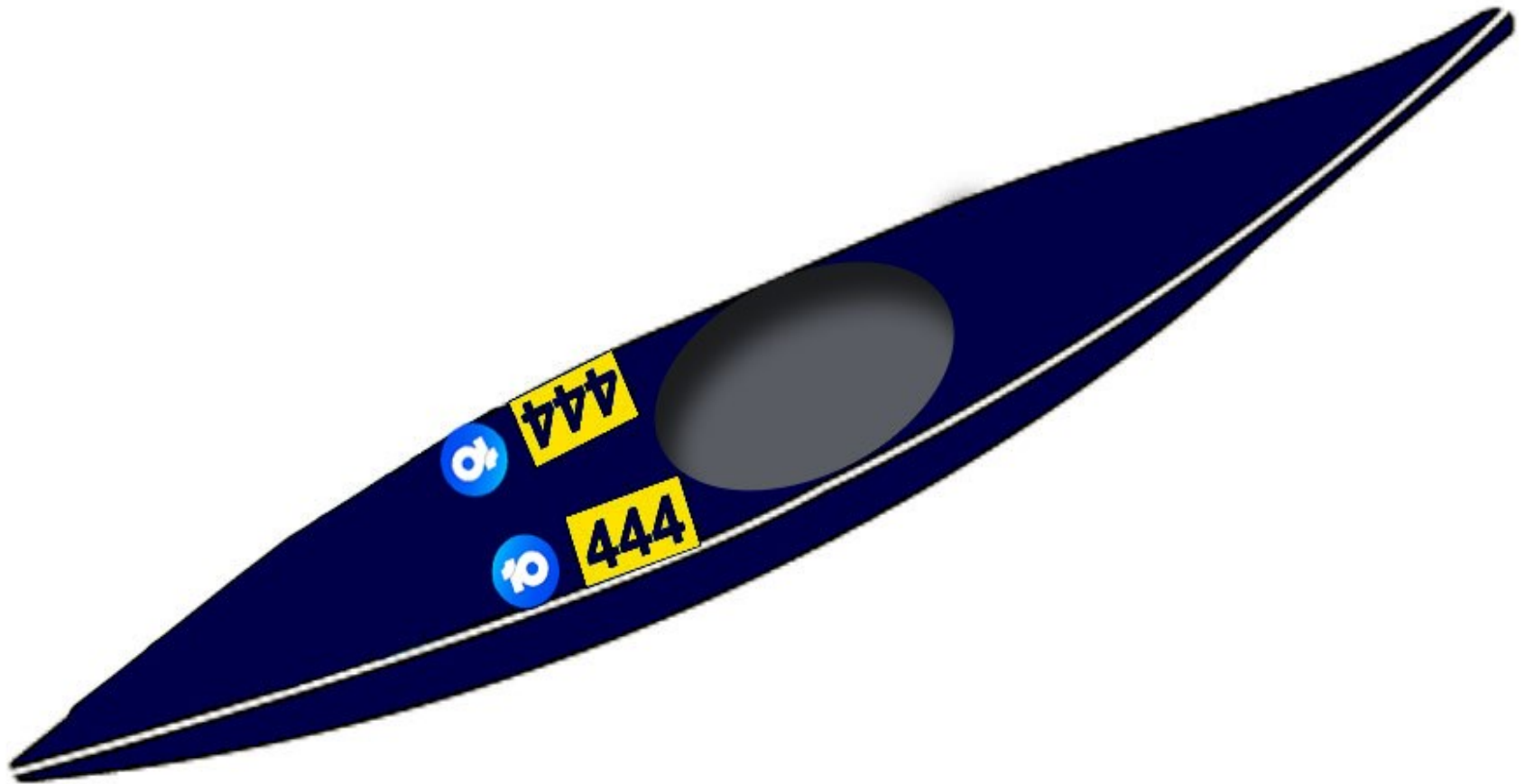


AVON DESCENT 2019

SAFETY BRIEFING & TIPS

STICKER PLACEMENT



STICKERS MUST BE ABOVE WATER LEVEL

FLAGS

RED

STOP

Do not proceed beyond this point.

BLACK

DISQUALIFICATION

Leave the water Immediately

ORANGE

CAUTION

Obstruction ahead.

WHITE

Caution to be used in area.

PORTAGING

**Katrine Bridge is a portage location ONLY
in high water.**

**Williamson's Weir is a compulsory
portage location for all novices.**

RAILWAYS

Obey Stop Signs

Follow instructions from Arc Infrastructure employees

**Between Lookout Rapids and Bells Rapids,
competitors may ONLY exit from the
Walyunga National Park (right-hand) side of
the river**

RAILWAYS (cont)

Speed limit on Rail Access Road is 20km/h

**Rail Access Road is one way ONLY
(emergency vehicles excepted)**

**Overtaking on Rail Access Road is NOT
permitted**

**Vehicles are NOT to be stationary in
middle of Rail Access Road**

OVERTAKING

The craft being overtaken **must hold its line while continuing to travel downstream.** Do not stop or divert your course.

The craft making the overtaking manoeuvre should make their presence known and take as wide a line as they can in a safe manner

POWERCRAFT CUT OFF TIMES

DAY 1 :

Northam Weir

Katrine Bridge Checkpoint

Toodyay Checkpoint

Wetherall Reserve Checkpoint

POWER CRAFT C

Start + 1hr 45min

Start + 3hr 45min

Start + 5hr 40min

When first paddle
reaches checkpoint

DAY 2 :

Emu Falls Checkpoint

Stronghills Farm Checkpoint

Bells Rapid Checkpoint

Upper Swan Checkpoint

Middle Swan Checkpoint

POWER CRAFT C

Start + 1hr 45min

Start + 2hr 30min

Start + 3hr 30min

Start + 4hr 30min

5:00pm

PADDLE CUT OFF TIMES

DAY 1 :

PADDLE CRAFT C

Northam Weir

Start + 1hr 45min

Katrine Bridge Checkpoint

Start + 3hr 45min

Toodyay Checkpoint

Start + 5hr 40min

Wetherall Reserve Checkpoint

Start + 6hr 30min

Ti Trees Checkpoint

4:00pm

DAY 2 :

PADDLE CRAFT C

Emu Falls Checkpoint

11:00am

Stronghills Farm Checkpoint

12:00pm

Bells Rapid Checkpoint

1:30pm

Upper Swan Checkpoint

2:30pm

Middle Swan Checkpoint

Between 3:30 – 4:00pm

(subject to DOT Marine Safety instructions
and current weather conditions)

WITHDRAWAL

Withdrawn competitors should approach a checkpoint official to have their withdrawal recorded. If this is not possible, SMS your race ID and withdrawal location to

0456 436 500

LEND ASSISTANCE

We ask that if a competitor is in distress on the side of the river that this is identified and appropriate action taken.

It is reasonable to expect that the care of an individual will take priority over a placing in the race.

**Respect private property of others
and in particular, the property
owners of the land we pass
through**

Support Passes

Support Crew Passes – up to 2 adults. More than 2 adults are charged per vehicle at each parking location.

Cobbler Pool Camping/Parking

\$25 Camping per adult, under 12yr old free

Day parking \$10 per vehicle

Card facility will be available at the gate and is the preferred option

Avon Tracker

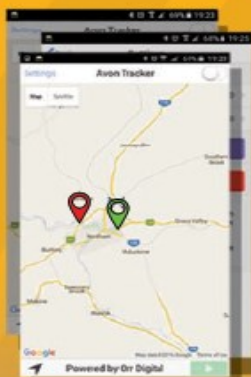
Mobile
GPS Tracking

Designed to assist competitors with:

- Support Crew Assistance
- Rapid Emergency Response

The AvonTracker is a FREE phone-based solution designed to increase competitor safety and improve emergency response during the Avon Descent.

Utilises a phone's GPS to provide up-to-date positional information



**Available
Now!**

Available on the
App Store

Get it on
Google play

See the Avon
Descent website
for more info.

developed
by

**ORR
DIGITAL**

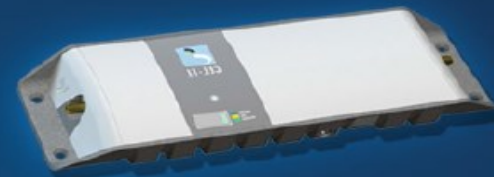
orrdigital.com.au

Custom RFID Solutions
Custom AV Trailers
Online Shopping
Website Hosting
App Development

michael@orrdigital.com.au

Are You Sick Of Having No Phone Reception ?

We supply Australia's first
carrier approved in-vehicle
and home repeaters



Introducing PTT over Cellular

- Global PoC service
- Cost Effective trunk features
- Drop in Chargers
- Robust Design
- Optional Remote Speakers
- Built-in GPS for duress and location awareness
- Mobile unit designed to fit into Standard DIN slot
- Works on all Australian Carriers

**We also have
experienced
technicians for:**

- Cel-Fi GO Installs
- CCTV Installs
Tv Antenna Installs
- Large Scale Wifi
Installs



shop.orrdigital.com.au