



AVON DESCENT

HELL OR HIGH WATER

2016 EVENT GUIDE

avondescent.com.au



ROYALTIES
FOR REGIONS



Sunday Times
perthnow.com.au





eyewitness
NEWS

FIRST AT FIVE

WELCOME

This year, the 2016 Avon Descent race will take you on an exciting two day trial, over 124 gruelling kilometres. The race offers competitors conditions ranging from long stretches of flat water that can test the endurance of the fittest athletes, rapids, thick ti trees, rocky drops to all the other challenges of a changing, wild river environment.

The Avon Descent travels through some of Western Australia's most picturesque country, and as you descend, you'll pass through the farming regions of historic Northam and Toodyay, forested national parks, steep gorges, the Swan Valley vineyard region and eventually, into the tidal waters of the upper Swan River. Competitors challenge the Avon and Swan Rivers in a variety of power dinghies and paddle craft including single, double and triple kayaks and single or double surf skis. Relay teams of two and four can also compete. Competitors are supported by family and friends as support crews and thousands of spectators line the banks to cheer them on.

WHERE WILL THIS
SUNDAY
TAKE YOU?}



10 WEEKS
HOME DELIVERY OF THE SUNDAY TIMES
ONLY \$10*

Then \$2.70 per week, min. cost \$10.80 billed 4 weekly*

Sunday Times

Subscribe today perthnow.com.au/10for10

The Sunday Times

Introductory offer to be billed as per the following The Sunday Times Home Delivered \$10.00 for 10 weeks. At the end of the initial 10 weeks, subscriptions will automatically renew to \$2.70/wk. \$10.80 billed 4 weekly. Renewals occur unless cancelled. Payment in advance by credit/debit card or PayPal only. On and from 4 July 2016, each payment, once made, is non-refundable, subject to law. You must provide a minimum of 7 business day notice, if you want to cancel your subscription. Cancellations will take effect at the end of the subscription period, which is current at the end of the 7 business day notice period. Offer is only available where normal home delivery exists for WA residents and not where additional freight is ordinarily charged. Not in conjunction with any other offer. New customers only. A valid and active email address is required for account set up. Full offer terms and conditions apply see www.perthnow.com.au/subscriptionterms for full details.

/ OUR TEAM

ORGANISING TEAM

Chairman
Vice Chairman
Director, Sport
Director, Marketing
Director, Logistics
Power Boat Delegate
Paddle Delegate
Local Government Authority Delegate
Treasurer
Event Coordinator
ADSU Manager

Kim Epton
Michael Orr
Greg Kaeding
Chris Hunt
Amanda Williamson
Jay Branson
Warren Southwell
Wendy Harris
Rex Adams
Alex Holcbarova
Simon Lalor

RACE CONTROL

Race Director
Deputy Race Director (Kayaks)
Deputy Race Director (Surf Skis)
Deputy Race Director (Power Boats)
Deputy Race Director
(Rescue & Recovery)

Jim Smith
Jerry Alderson
John King
Brett Waldock
Simon Lalor

CONTACT US

E: info@avondescent.com.au | W: www.avondescent.com.au

AVON DESCENT LEGENDS

In 2012, the 40th Anniversary of the Avon Descent, the NADA Board sanctioned the creation of a special recognition for individuals to be known as the Avon Descent Legends.

- Rex Adams
- John King
- Jim Smith
- Kim Epton
- Darryl Long
- Ian Williamson (deceased)
- Greg Kaeding
- Neil Long

FREEMAN OF THE AVON DESCENT

A nominee for 'Freeman of NADA' must have 10 years exceptional service to the Association at a suitably high level.

- Rex Adams
- Kevin Harrison
- Bob Quin
- David and Sheila Bray
- Jim Paine (deceased)
- Jim Smith
- Graeme Birkett
- Gerry Post
- Tully Telenta



0447 199 851
EVENT EMERGENCY CONTACT:

/ OUR TEAM (Continued)

MANAGEMENT VOLUNTEERS

Alexandra Holcbarova	Event Coordinator
Karina Groenwoldt	Marketing Support
Sean Dunstan	Sport Coordinator
Monica Szymaniak	Sponsor Support
Fran Diettrich	Media Liaison
Doug Hodson	Traffic Management/Marketing
Kinjal Desai	Community Liaison
Xanette van der Merwe	Graphics
Dave Hunt	Management Plans
Tad Sieczka	Checkpoints
Tanzy Maxfield	RaceHub Manager
Jeff Hodgkinson	Power Boat Time Trial
Kevin Green	Power Boat Time Trial
Michael Prosser	Finish Line Coordination (Power Boats)

CAMPSITE REJUVENATION TEAM

Amanda Williamson	Committee Lead
Tanzy Maxfield	RaceHub Manager
Stephanie Cannon	RaceHub Operations Staff
Kelly Moroney	RaceHub Operations Staff
Jay Branson	Campsite Rejuvenation Committee – Starters Tower & Vessel Extraction System
Wayne Spencer	Campsite Rejuvenation Committee – Starters Tower
Matthew Spencer	Campsite Rejuvenation Committee – Starters Tower
Bec Moroney	Entertainment Manager
Jayne Branson	Kids Zone Manager
Leah Adams	Kids Zone Volunteer
Emma Thomson	Pit Management & Competitor Coordination
Kitty Celenza	Pit Management & Competitor Coordination
Caitlan O'Connell	Pit Management & Competitor Coordination

/ SUPPORT

OUR COMMUNITY SUPPORTERS

We'd like to extend a massive THANK YOU to the following groups in the local community for their ongoing support of the Avon Descent. The time, knowledge and contribution offered year after year certainly does not go unnoticed, and we thank you for your hard work and dedication!

Ascot Kayak Club	Checkpoints and Kayak/Canoe Scrutineering
Boral Quarries	Provision of Campsite
Brookfield Rail	Rail Safety
Bullsbrook Volunteer Bush Fire Brigade	Parking/Buses into Walyunga National Park
Grass Valley Volunteer Fire Brigade	Fire Security Cobbler Pool Campsite
East Swan Volunteer Fire Brigade	Parking and buses into Bells Rapid
Gingin Lions Club	TBA
Northam Lions Club	Start Marshalling Area/Traffic Management
Northam SES	Traffic Management
Power Dinghy Racing Club	Power Boat Pre- and Post-Race Scrutineering
Toodyay Football Club	Parking at Extracts Weir
Toodyay Lions Club	Campsite Services
West Coast Car Club	Communications Network

Build something great™

Boral Construction Materials



Suppliers of concrete, asphalt
and quarry products

Boral is the proud sponsor of the Cobbler
Pool Campsite

See page 26 for more information

/ SPONSORS & PARTNERS

MAJOR SPONSORS



ROYALTIES
FOR REGIONS



MEDIA SPONSORS



COMMUNITY PARTNERS



OFFICIAL PARTNERS



OFFICIAL SUPPORTING SPONSORS



CONTENTS

Our Team.....	4
Our Sponsors.....	8
Messages.....	10
Ian Williamson Tribute.....	13
PDRC & WCDRC.....	14
Calendar of Events.....	15
Race Packs & Scrutineering.....	16
Course Info.....	20
Support Crew Info.....	23
Cobbler Pool Campsite.....	26
Overview Map.....	28
Sue Quick Tribute.....	30
Spirit Interstate Challenge.....	34
Act Belong Commit ADSU.....	36
Family Fun Days.....	38
Spectator Locations.....	42
Course Stages.....	44
Race Record Holders.....	52

As we prepare for another challenge in the wonderful Avon Valley, we should recall the last minute rains that produced an instant river last year and brought about a collective sigh of relief.

While that was fortunate timing, the recurrence of such events should not be relied upon and the changing nature of the river is a reality. This is our 44th year and it cannot be denied that there was generally more water under our keels in the first 22 years

than the last.

Whether this is a permanent trend or not, it tests the resolve of all involved in the Avon Descent, on and off the water. Northam's Avon Descent Association is responsible for all aspects of the event—its history and its future—and is determined to ensure the Avon Descent remains a prominent fixture on the event calendar in Western Australia.

NADA also recognises, as we all must, that a different perspective is needed if we are going to stay positive and strive to protect the unique privilege of racing paddle craft and power boats down the valley.

This provides an opportunity to broaden the appeal of the Avon, perhaps encouraging competitors such as endurance athletes and adventure racers to join the hundreds of paddlers and power dinghy racers who define the event each year.

NADA recognises the special place the Avon Descent has in Western Australia and believes that the community wants to continue to enjoy its unique offering. This year we will witness power dinghy racer Gary McNamara compete in his 40th Avon Descent – the first competitor to reach that milestone – and Gary is a perfect example of the of the enduring commitment that exists for the event.

We will do our very best to make sure others have a chance to continue the legend of the Avon—Hell or High Water.

**TIME TO TEST OURSELVES
HELL OR HIGH WATER**

/ MESSAGE 2016

KIM EPTON, Chairman, Northam's Avon Descent Assoc.

On behalf of the Board of Directors of Northam's Avon Descent Association I welcome competitors and support crews to the 2016 Avon Descent.

With the assistance of the State Government through Tourism WA and Royalties for Regions, and the staging of the Family Fun Days by the five Local Governments along the course, and support from the East Metropolitan Regional Council and Lotterywest, the Avon Descent confirms its status as a grassroots community event, and a celebration of the Western Australian lifestyle.

Thank you to all of our Sponsors for their support including our media partners Network Ten, Mediavation, and The Sunday Times. In addition to all the sporting and community groups who receive financial or social benefits from the event, thank you to the Act Belong Commit Avon Descent Support Unit for their safety, rescue, recovery, and first aid services.

The 2016 Avon Descent will be broadcast all around Australia on the Ten Network and will have a potential international viewing audience of hundreds of millions.

To the many Volunteers who have come forward this year in a time of change, know that your efforts have made a difference and, without you, there would be no Avon Descent. I pay tribute to the years of dedicated work of my predecessor, Kevin Harrison, and to his continued contribution this year towards the success of the event.

Best wishes for a safe and successful event.

FRANK FILOSI, General Manager Network 10, Perth

Network Ten Perth is proud to be the Official Media Sponsor of the 2016 Avon Descent. This iconic Western Australian sporting event is actively embraced by Network Ten with a television special broadcast nationally a few weeks after the race weekend, enabling all Australians to enjoy the spectacle.

Network Ten Perth proudly supports local community activities and assists in ensuring they are a success by providing a variety of highly specialised skills and resources.

Our association with the Avon Descent has a long and proud history and we have seen it grow to reach the international status that it enjoys today. TEN Eyewitness News First At Five and our experienced production team get right behind this event and enjoy it immensely.

Network Ten Perth congratulates the Northam Avon Descent Association, all the volunteers and the competitors for their commitment, dedication and hard work in making the Avon Descent a worldwide success.

Good luck to everyone involved and have a great 2016 Avon Descent.



PREMIER'S WELCOME MESSAGE



Hon Colin Barnett MLA
Premier; Minister For Tourism

Welcome to the 2016 Avon Descent.

Since 1973, participants and spectators have been thrilled by this iconic Western Australian event and its picturesque but challenging 124km course.

This year's "hell or high water" theme shows the competitive spirit will be as strong as ever for all those involved with the 44th Avon Descent and its unique blend of power dinghies and paddle craft.

The 2016 event will see kayaks and surf skis compete in two separate divisions, while Ironmen from across Australia will race in the Interstate Surf Ski Challenge.

The Avon Descent is proudly supported by the State Government through Tourism WA's Regional Events Program, which is made possible by Royalties for Regions.

Royalties for Regions invests in a variety of initiatives to help grow Western Australia's regional areas into vibrant communities with strong economies, and tourism plays an important role in achieving this.

Tourism is a vital industry for regional Western Australia. In 2015, visitors spent \$9 billion in the State, including \$4 billion in regional WA.

Events such as the Avon Descent help to boost regional areas economically, socially and culturally by bringing visitors, vibrancy and valuable exposure to key tourism destinations across the State.

We hope you enjoy all the Avon Descent action over the next two days and best of luck to all the competitors.

Hon Colin Barnett MLA
PREMIER; MINISTER FOR TOURISM



Hon Terry Redman MLA
Minister For Regional
Development

Hon Terry Redman MLA
MINISTER FOR REGIONAL DEVELOPMENT

/ MESSAGE 2016

MAREE DE LACEY, Acting Executive Director Healthway

Healthway is delighted to support the Avon Descent Support Unit which is a vital part of the 2016 Avon Descent and a great way of demonstrating the Act-Belong-Commit message.

Just like Act-Belong-Commit, the Avon Descent Support Unit is all about connecting with other people and making a commitment to work with them for a common cause. The ADSU unites people from all walks of life from Perth and regional areas as they use their different levels of physical ability and technical skills in a cohesive team spirit that binds them together and underpins this iconic annual event.

After many months of training together, ADSU volunteers will be there on the 2016 Avon Descent weekend using team work to support the event, making it as safe as possible for competitors and for spectators.

As the Act-Belong-Commit message says, people can build positive mental health by taking action to be physically, mentally and socially active. This can include setting goals, staying involved in family and community activities, participating in community events and by making a commitment to challenges or causes that provide meaning and purpose in their lives.

Volunteering for the ADSU is one of those ways people can connect with each other to support a common interest. And, the competitors in the 2016 Avon Descent have also demonstrated how to Act-Belong-Commit by choosing to take on a challenge, committing to training and staying on course to achieve their goals.

From everyone at Healthway – enjoy the event!

ROSALIE EVANS, Executive Officer, Canoeing WA

On behalf of the Canoeing WA Board and members, I would like to wish all Avon Descenders the best of luck for this year's Avon Descent.

With the early rains I am sure everyone is going to have a great two days, whether it is your umpteenth Avon or this is your first and you are just ticking off a bucket list item – enjoy every moment of this amazing Event.

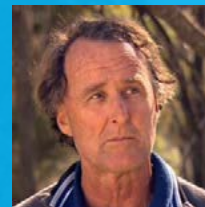
The comradery that you find on the River over those two days are incredible, as everyone understands what the other person is going through, whether you are an Olympian or weekend warrior. So remember to encourage and respect all other competitors whether paddle or power.

Also remember the Avon Descent is not the only paddle event on the calendar, there are paddle events almost every weekend through-out the year, either through our twelve clubs or our own Canoeing WA events, so wherever you are in your paddling, and you want to improve and do better in next year's Avon, go to www.wa.canoe.org.au for more information about who we are and what we do.

See you on the water.



TRIBUTE TO IAN WILLIAMSON



The death of Ian Williamson in April was a shock to the Avon Descent fraternity and a sad reminder of the enormous contribution he made to power dinghy racing and the management of the event in general. Ian, who was 67, was lining up for his 37th Avon this year and it would surprise nobody to know that he was just as excited about that prospect as he was back in 1980.

Ian was a five-time Avon winner and proud to have won four of those with son Todd in their familiar boat 166. He also raced with daughter Mandy in 1993. Away from the river Ian's enormous energy and willingness to contribute resulted in years of invaluable service to both the Power Dinghy Racing Club and Northam's Avon Descent Association.

Ian was born in Edinburgh in 1949 and, though he arrived in Fremantle as a two year old, remained very proud of his Scottish heritage. Before marriage, family and the launch of a successful business, Ian was a National Serviceman and saw combat in Vietnam as a forward scout in an infantry section with the 4th Battalion, Royal Australian Regiment.

In later civilian life he combined his skills to establish a highly regarded concrete contracting business that continues to serve the Perth building industry under the guidance of Todd. Mandy's chosen career in the army was also a great source of pride for Ian, especially when she rose to the rank of Lieutenant-Colonel.

Ian was an avid surfer and no doubt put those skills to good use as he and Todd skimmed down the Avon Valley at full tilt.

Among the passions he listed were being organised in preparing for work or play, seeing his children grow up and achieve and enjoying travel. He was keen on wildlife preservation and anything scientific that helped explain how the world worked.

Ian's devilish sense of humour will be remembered by many and he listed his major dislikes as harmful gossip, spinach, global warming, onshore winds, animal cruelty, incompetence, tailgaters, wasteful packaging and DNFs.

Ian met life head on, enjoyed it tremendously and leaves an enduring legacy.

/ POWER DINGHY RACING CLUB (PDRC)

The PDRC (Power Dinghy Racing Club) was formed in 1976 by Avon Descent competitors who wanted more racing than one weekend a year. The club's race calendar has twelve races each year. River racing is confined to winter months from June to October where four races are held on the Blackwood River in the South West.

The Avon Descent is our main event for the year making a total of five river races. Summer months are taken up with six circuit races in front of our clubrooms on the Swan River. With competing members aged between 10 and 70, including a ladies' class, the whole family can be involved. Safety is paramount in this sport and is strictly controlled. PDRC membership covers Public Liability as well as Personal Accident Cover.

New members are assisted in sourcing boats, motors, race gear to get them on the water. Advice on setting up race craft and tactics are gladly given. Expeditions on rivers in Eastern States and the north of WA take place each year. River Racing is the mainstay of the PDRC which takes us to areas of Australia few are able to see and enjoy. We have an active social calendar with excellent club facilities at the Burswood Clubrooms - 1 Camfield Drive, Burswood. (In front of the Burswood Casino).

To get started contact Commodore Todd Croswell on 0411 221 500 or www.dinghyracing.com.au

/ WEST COAST DINGHY RACING CLUB (WCDRC)

The West Coast Dinghy Racing Club Inc. ("WCDRC") was formed in September 2012 by a passionate group of men and women who wanted a family friendly club with its goals to help new members get involved with the sport and to increase the number of power boats entering the Avon Descent. Now in our third season of racing, the club boasts members from all walks of life and abilities – from Racing Veterans to Novices, Avon Descent Champions to those looking to compete for the first time this year.

Our club's emphasis and attention is on the South West of Western Australia - from Mandurah in the north to Augusta in the south and Boyup Brook to the east, with the intent of bringing the sport to the south west region throughout the year. The WCDRC races are conducted in varied water bodies including rivers, estuaries, the ocean and closed circuits within the South West each year in the lead up to the Avon Descent. One of our proud veteran members is Kevin Williams. In 2011 he and his son, Joshua came 1st in the Avon Descent "Past Racer and Novice Class" in record time. Kevin is now in his 35th year of racing power dinghies and has no plans on giving up soon! Since our inception, the club has been instrumental in enticing 14 new boats into the sport.

Membership numbers have increased month by month this year and we look forward to playing a pivotal role in growing the numbers in our sport – not just our club – for countless years to come. Kim Bolvary, Commodore

CALENDAR OF EVENTS

SATURDAY 16 JULY	: Power Boats Practice day – Extracts Weir, 10am - 1pm
FRIDAY 22 JULY	: Race Pack Collection 8:00am - 6:00pm
SUNDAY 24 JULY	: Scrutineering, Hinds Reserve Bayswater : Paddle Craft: 8:00am : Power Craft: 8:00am : Scrutineering – Safety Briefing: 10:30am : Power Craft Time Trials: 12:00noon - 4:00pm : Proposed course: Bells Rapids to Middle Swan Bridge (No further South)
SATURDAY 30 JULY	: Practice Day 1 : Paddle Craft Practice: 8:00am - 12:00noon : Power Craft Practice: 12:00noon - 5:00pm
SUNDAY 31 JULY	: Practice Day 2 : Power Craft Practice: 8:00am - 12:00noon : Paddle Craft Practice: 12:00noon – 4:00pm
FRIDAY 5 AUGUST	: Competitor Registrations: Northam Swimming Pool – 2:00pm – 9:30pm : Craft Drop Off: Start Marshalling Area – 2:00pm – 9:30pm : Shire of Northam Avon River Festival
SATURDAY 6 AUGUST	: Day 1 Event Start: Northam at 8:00am : Ian Williamson Tribute at 7:30am : Shire of Toodyay International Food Festival
SUNDAY 7 AUGUST	: Day 2 Event Start: Cobbler Pool Campsite : Avon Junior Challenge : City of Swan Family Fun Day : City of Belmont Family Fun Day : City of Bayswater Family Fun Day

BE ACTIVE AVON CHALLENGE

The Avon Challenge presented by Be Active is conducted by Canoeing WA, in association with the Northam Avon Descent Association. The race is open to junior paddlers from schools, clubs, and other organizations, and individuals. Many juniors who have started with the Junior Avon have gone on to represent Australia at the highest level of paddling in their respective disciplines. This year the race will also be open to Dragon boats, Outriggers and Stand up Paddle Boards. The Avon Challenge will be held on the Swan River on the 7th August over the last 16 kilometres of the Avon Descent course. Finishing at Riverside Gardens Bayswater.



/ RACE PACK COLLECTION

FRIDAY 22 JULY at PDRC (Power Dinghy Racing Club) at 8:00AM TO 6:00PM.

1 pack each for solo and double entrants, and 1 pack per team. All entrants MUST collect their Race Packs.

Please Note: Entry Packs will NOT be posted out to you as per previous years.

STICKERS AND IDENTIFICATION

The following sponsors stickers will be supplied with your competitor pack and must be placed on the craft in accordance with the Rules. Sponsors stickers from previous Avon Descents must be removed prior to the commencement of the 2016 event.

NETWORK TEN STICKERS: 2 x stickers on craft

SUNDAY TIMES STICKERS: 2 x stickers on craft

RACE ID NUMBERS

PADDLE CRAFT: Your official CRAFT Race ID Number sticker will be given to you with your race pack. Your HELMET Race Id Number Sticker will be given to you at registration along with your blue Chip UHF Timing tag.

POWER CRAFT: Your official HELMET Race ID Number sticker and blue Chip UHF timing tag will be given to you with your race pack on collection day. These are to be applied prior to scrutineering and used for time trials. These will also be used for the event weekend, so please take care of these once applied in the lead up to the event.

RACE ID STICKERS AND BLUECHIP TIMING DEVICES

HELMET STICKERS: Competitors must have their helmets clear for both the timing chips and race ID number- please ensure any old numbers are removed. Any competitors with a carbon helmet must apply a foam spacer between the helmet and the timing chip. Please see the bluechip timing team at registration if you need the spacer.

TIMING CHIP STICKERS: The timing device is a sticker which is Ultra High Frequency. There are two stickers for individual competitors, teams of two and teams of four. Double or triple paddle teams and power craft teams will receive 1X set of timing device stickers which must be worn by the front paddler or power craft driver. Stickers must be placed on each side of the helmet.

RACE ID NUMBER: The sticker is to be applied over the top of the timing chip. The timing chip must be applied straight and without folding, crinkling or bending. It must also not be stuck over any screws or metal plates on the outside of the helmet. Timing stickers must remain on the helmet for the duration of the event.nt.

SUPPORT CREW STICKERS AND PASSES

Support Crew Sticker: Display on front windscreen clearly visible to officials.

National Parks and Bells Rapid Passes: To be handed to gate attendants for entry, shuttle buses will be provided. Parking, bus and entry will be at a cost of \$10.00 per vehicle.

Valley Sticker (for team's only): Display adjacent to Support Crew sticker on front windscreen

Note: No sticker = NO ENTRY to Valley Rd or Changeover 1 on Day 2

Wristbands MUST be worn at all times around the campsite.

**** Standard campsite entry can be purchased at the gate for \$20 pp. See page 26 for more information.**

Please note: no passes will be re-allocated under any circumstances - please ensure you do not misplace any of these items.

/ SCRUTINEERING

Sunday 24 July - Hinds Reserve Bayswater - Paddle Craft & Power Craft at 8:00am

Pre-Race scrutineering is compulsory for all entries with at least one entrant living within 200 kilometres of the Perth GPO. The Scrutineer is a 'judge of fact' and a protest may not be made against their decision. All craft, Personal Floatation Devices (PFD's) and helmets will be checked for compliance with the specifications.

Late scrutineering is subject to approval of NADA. Interstate/overseas and entrants living outside of 200 kilometres of the Perth GPO are not exempt from the above requirements – late scrutineering arrangements must be made.

COMPULSORY COMPETITOR SAFETY BRIEFING: A representative from each entry must attend the compulsory safety briefing at scrutineering, at 9:30am and 10:30am. Failure to attend this Safety Briefing may result in ineligibility to start the race.

POWER CRAFT: Department of Transport officials will check every Power Craft. They have informed us that this year they will be VERY strict on craft registrations. Be very sure you have the CORRECT rego sticker on the port, rear side of your craft. DO NOT have a sticker that relates to another boat you may have. Your craft should have a HIN number, be sure it is shown correctly. Our Volunteers will help you to put stickers on the correct spot at the scrutineering, DOT have been lenient and allowed some craft to do the time trial even though some rego details have not been correct.

/ TIME TRIAL

NOTE: If you are not able to comply with all regulations at scrutineering, you will not be allowed to enter the time trial.

SUNDAY 24 JULY - 12:00pm to 4:00pm

No craft away any later than 3:00pm

Bottom of Bells Rapids to Middle Swan Bridge - No further south.

/ PRACTICE WEEKEND

PRACTICE DAY ONE - SATURDAY 30 JULY 2016

Paddle Craft Practice: 8:00am - 12:00noon all sections of the river.

Power Craft Practice: 12:00noon - 5:00pm Northam Weir and Posselt's Ford and downstream of Bell's Bridge to Middle Swan Bridge - No further south.

PRACTICE DAY TWO - SUNDAY 31 JULY 2016

Power Craft Practice: 8:00am - 12:00pm Northam Weir and Posselt's Ford and downstream of Bell's Bridge to Middle Swan Bridge - No further south

Paddle Craft Practice: 12:00pm - 4:00pm all sections of the river. Two days have been set aside for Power Craft to practice on certain parts of the course. Paddle craft are NOT to practice in the below areas during these times. This is an officially sanctioned event and motor, boat and all race gear used must be as per the PDRC Rules and Regulations in order for insurance cover to be effective. Random checks will be conducted. We recommend checking out as much of the course as possible prior to practice weekend, accessing as many points as legally possible. Specific points to check out are: Northam Weir exit, Dumbarton Bridge, Extracts Weir, Duidgee Park, Toodyay (Rubbish Tip) Rapid, Leatherhead Rapid, Syds Rapid, and Bells Rapid. Participation in the Practice Days is the responsibility of the entrant and is undertaken at their own risk. Participants must avoid travel in the upstream direction during practice. Upstream travel under Katrine Bridge is NOT permitted.

Plan Ahead – Remember it gets dark quickly in the valley so leave yourself plenty of time.

/ EVENT REGISTRATION

Friday 5 August - Northam Swimming Pool - 2:00pm to 9:30pm

A representative from each entry will need to attend event registration on Friday 5 August 2016 at Northam Swimming Pool, for helmet sticker/timing chip collection. Grid positions for Day 1 will be posted at registration. Competitors will not be registered until their equipment has passed scrutineering. Competitors are not eligible to start the race unless they have registered, and cannot be registered on Saturday 6 August.

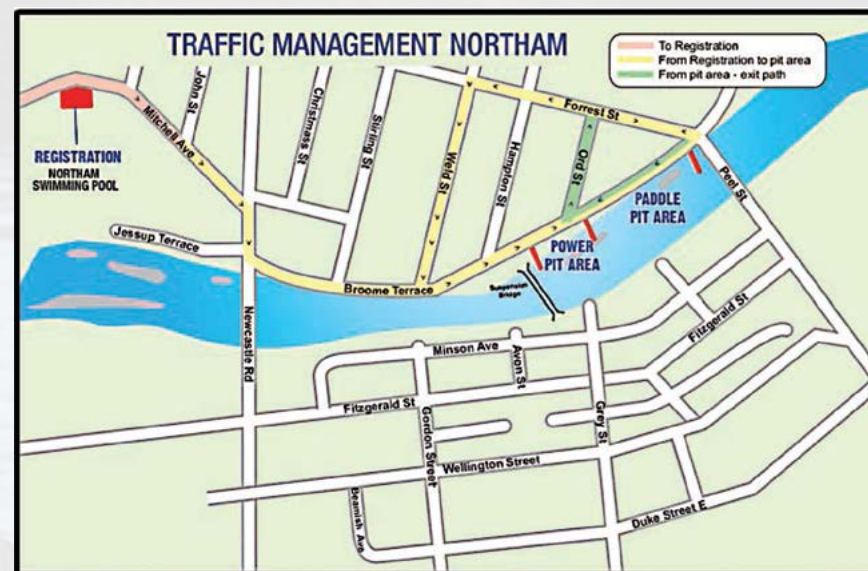
/ CRAFT DROP OFF

Once competitors have registered, they must then drop their craft off at the Start Marshalling Area. For teams this is the starting person's craft only. The start marshalling area will be open:

2:00pm – 9:30pm on Friday 5 August 2016.

The Start Marshalling Area is near the main traffic bridge, follow the instructions of the Start Marshall. Craft not in the Start Marshalling Area by –

9:30pm on Friday 5 August 2016 will not be permitted to start.



/ START LINE INFO

The Day 1 start is at Northam and the start order is as follows:

- Power craft start at 8:00am
- Ian Williamson Tribute at 7:30am
- Paddle craft start 10 minutes after the start of the last Sundry Power craft grid depending on water levels, and determined by the Race Director

The Day 2 start is at Boral Cobbler Pool Campsite, Toodyay;

- Paddle craft start at 7:00am
- Power craft start at 12:00pm (Subject to change by the Race Director)
- Final start time will be provided by the Race Director at the campsite, 4pm on Day 1

Start Procedures – Start procedures for paddle and power are outlined in the **event rules.**

/ COURSE INFO

STAGES - The course is divided into 9 stages:

Day 1	Town of Northam to Boral Campsite	52 km
Stage 1	Town of Northam to Katrine Bridge	17 km
Stage 2	Katrine Bridge to Toodyay	15 km
Stage 3	Toodyay to Wetherall Reserve	9 km
Stage 4	Wetherall Reserve to Boral Campsite	11 km
Overnight Stop		
DAY 2	Boral Campsite to City of Bayswater	72 km
Stage 5	Boral Campsite to Emu Falls	8 km
Stage 6	Emu Falls to Stornghills Farm	10 km
Stage 7	Stronghills Farm to Bells Rapid	21 km
Stage 8	Bells Rapid to Middle Swan	18 km
Stage 9	Middle Swan to Bayswater Finish	15km

WILD WATER - GRADE DIFFICULT

Grade 1	Not difficult, regular stream, regular waves, small rapids and simple obstructions
Grade 2	Moderately difficult, passage free, irregular stream, irregular waves, medium rapids, small stoppers, eddies/whirlpools and pressure areas. * Simple obstructions in stream and small drops
Grade 3	Difficult, route recognisable, high irregular waves, larger rapids, stoppers, eddies and whirlpools and pressure areas. * Isolated boulders, drops and numerous obstructions in stream.
Grade 4	Very difficult, route not always recognisable, inspection mostly necessary, heavy continuous rapids, heavy stoppers, whirlpools and pressure areas. * Boulders obstructing stream, big with undertow
Grade 5	Extremely difficult, inspection essential, extreme rapids, stoppers, whirlpools and pressure areas. *Narrow passages, steep gradients and drop with difficult access and landing
Grade 6	Limit of practicability, generally speaking impossible. *Possibly navigable at particular water levels, high risk, even experts risk life.

Notes **Pressure areas" refer to water piling up against a rock or other obstacle. Weirs are not classified as wild water and as such are not evaluated. They are either easily navigable or (very) dangerous. WARNING - Although the more dangerous spots are marked, the river can change at any time and must be approached on the basis that it is dangerous at all times and at all points along the length.

/ CUT-OFF TIMES

Any craft that does not complete Day 1 cut off time will not be permitted to start on Day 2. The following cut-off times shall apply (subject to change by the Race Director).

POWER CRAFT

DAY 1 :	POWER CRAFT CUT OFF TIMES
Northam Weir	Start + 1hr 45min
Katrine Bridge Checkpoint	Start + 3hr 45min
Toodyay Checkpoint	Start + 5hr 40min
Wetherall Reserve Checkpoint	When first paddle craft reaches checkpoint
DAY 2 :	POWER CRAFT CUT OFF TIMES
Emu Falls Checkpoint	Start + 1hr 45min
Stronghills Farm Checkpoint	Start + 2hr 30min
Bells Rapid Checkpoint	Start + 3hr 30min
Upper Swan Checkpoint	Start + 4hr 30min
Middle Swan Checkpoint	5:00pm

PADDLE CRAFT

DAY 1 :	PADDLE CRAFT CUT OFF TIMES
Northam Weir	Start + 1hr 45min
Katrine Bridge Checkpoint	Start + 3hr 45min
Toodyay Checkpoint	Start + 5hr 40min
Wetherall Reserve Checkpoint	Start + 6hr 30min
Ti Trees Checkpoint	4:00pm
DAY 2 :	PADDLE CRAFT CUT OFF TIMES
Emu Falls Checkpoint	11:00am
Stronghills Farm Checkpoint	12:00pm
Bells Rapid Checkpoint	1:30pm
Upper Swan Checkpoint	2:30pm
Middle Swan Checkpoint	Between 3:30 – 4:00pm (subject to DOT Marine Safety instructions and current weather conditions)

/ TEAMS

ENTRY

Each team entry is issued with one (1) Valley 2016 sticker. You will only get one so don't lose it! This allows access to the Valley Road on Day 2.

Turn right when leaving the campsite (stage 5 & 6).

Sticker must be placed adjacent to your Support Crew 2016 Sticker.

No valley pass = no entry to valley road and changeover 1 on day 2.

The Valley Road is a private road. ALL vehicles must always give way to emergency and official event vehicles and obey all directions of race officials. No stopping is permitted on the Valley Road except at designated changeover points.

UNAUTHORISED STOPPING ON THE VALLEY ROAD MAY INCUR A 10 MINUTE TIME PENALTY TO YOUR TEAM.

TEAMS CHANGEOVER

An inflatable buoy will indicate that a changeover will occur in 50m. Where timing gates are installed, all team Paddle Craft must pass through all timing gates. Changeovers must take place after having passed through the timing gate. Pairs can paddle 2 sections each per day. Pairs can paddle consecutive sections, however MUST portage at the intersecting change over point. Fours must changeover at each changeover point and each paddler must paddle one section per day.



/ SUPPORT CREW

CHECKPOINTS (Team Changeover)

Please read the important information which follows regarding the checkpoints and information board locations.

- Ti Trees and Walyunga are now safety checkpoints although there is information available at Ti Trees only
- Upper Swan Checkpoint has been reinstated and support crew information is available.
- Cut-Off time at Middle Swan Bridge is 4:00pm for Paddle Craft - 5:00pm for Power Craft.

Checkpoint	Location	Teams Changeover	Info Board
Day 1			
1	Katrine Bridge	Yes #1	Near Bridge
2	Newcastle Bridge (Duidgee Park)	Yes #2	Under Bridge
Safety	West Toodyay Bridge	No	Under Bridge
3	Wetherall Reserve Checkpoint	Yes #3	On River bank
Safety	Ti Trees	No	Available
4	Cobbler Pool	Yes	Finish Line Info Tent
Day 2			
5	Emu Falls	No	Airstrip Parking Area
6	Stronghill Farm	Yes #1	Not Available
7	Bells Rapids	Yes #2	On River bank
Safety	Walyunga National Park	No	Not Available
8	Upper Swan	No	On River bank
9	Middle Swan Bridge	Yes #3	On River bank
10	Bayswater Riverside Gardens	Yes	Finish Line

NB. If support crews decide to enter Walyunga National Park, parking and bus fee of \$10 is payable to attendants (proceeds aid the Bullsbrook Volunteer Fire Brigade).

/ CHECKPOINTS

- Checkpoints will be identified by a large sign with the letter 'C' displayed in black.
- Competitors passing Checkpoints should call out their Race Identification Number to ensure they are accurately recorded. Responsibility rests with competitors.
- Competitors must follow the directions of Checkpoint Officials.
- Penalties apply to those who disobey or ignore directions of Checkpoint Officials. **See Event Rules**

/ SELECTING YOUR STOPS

Your stops depend on your goals! Liaise with other paddlers to combine all the support resources. If you're a more experienced competitor you will probably choose fewer stops than a novice. However when anyone stops, it will be brief and you will want a quick refill of water and food ready to eat i.e. Bananas already peeled!

If you're a novice, you might opt for more support stops, and you might sail by with a cheery wave to the support crew (who will have spent hours fighting with the traffic and the mud to be in the right spot!) On the other hand when a novice does stop they may need psychological support as much as food and drink.

Make sure your support crew are familiar with a map of the area and the actual roads themselves. Remember to allow plenty of time for your support crew to get to their stops during the race as traffic can be tedious! We strongly recommend two cars leap-frogging positions as the best way to cover all eventualities. Plan equipment to be carried to the water's edge... a spare paddle is useless back in the car park!

SUPPORT CREWS MUST WEAR A LIFE JACKET WHEN ENTERING THE WATER; OTHERWISE THEIR TEAM/COMPETITOR RISKS DISQUALIFICATION ENSURE ALL YOU'RE SUPPORT STICKERS AND NATIONAL PARK PASSES ARE IN ORDER.

- All Competitors - Support Crew 2016 Sticker on front windscreen of support vehicle.
- Teams Competitors Only – Valley 2016 Sticker placed adjacent to your Support Crew 2016 sticker. One Pass per Team.

Remember: No Valley Entry Sticker = No Entry to Valley Road Day 2 or Changeover # 1 at Stronghills.

- Ensure your support crew have their Extracts Weir, Avon Valley National Park and Bells Rapid Passes to gain free access to the parks on race day, otherwise they will need to pay the \$10 entry fee (proceeds aid the Toodyay Football Club, Gingin Lions respectively).
- National Park Gates close at 5:00pm and No Dogs Permitted.



PCE
PERTH CIVIL EARTHWORKS

Mobile: **0439 928 500**
Level 2, 105 Hays St SUBIACO WA 6008
Email: info@perthce.com.au
www.perthcivilearthworks.com.au



• Large & Small Land Clearing • Bobcats, Truck & Tipper Hire
• Project Management • Land Clearing • Bulk Cut and Fill
• Excavating Hire • Labour Hire • Final Trim Operators
• Landscape Preparation • Rubbish & Soil Removal



PAS
PERTH | ACCESS | SCAFFOLDING

**PERTH ACCESS SCAFFOLDING SERVICES
COMMERCIAL AND INDUSTRIAL SECTORS.
THE SERVICES INCLUDE:**

- HIRE & LABOUR (SKILL WORKFORCE)
- PROJECT MANAGEMENT
- DESIGN AND ENGINEERING
- CONSULTING

WWW.PERTHACCESSSCAFFOLDING.COM.AU

Proud Official Production Partner of the 2016 Avon Descent™



mediavation
CREATIVE PRODUCTION

www.mediavation.tv



/ BORAL COBBLER POOL CAMPSITE

The campsite for competitors and their support crews is located at the traditional Boral Cobbler Pool campsite at the end of Day 1/start of Day 2, however only a basic infrastructure will be in place. The campsite is available for camping both Friday and Saturday nights, however main facilities will only be available Saturday night.

The Toodyay Lions Club will manage the site and allocations will be on a first in/first served basis. Please be familiar with the campsite rules and the environmental policy on the website avondescent.com.au under the Cobbler Pool Campsite area. Under no circumstances are dogs or any other pets allowed at the campsite.

CAMPSITE FEES

Cobbler Pool Overnight Wristbands: **RED** (available for \$20pp). This will allow for up to 2 nights camping at the Cobbler Pool site.

RaceHUB Wristbands: **YELLOW** (available for \$10pp)

Campsite tickets can be purchased at the gate

Campsite Wristbands **MUST** be worn at all times around the campsite

Children under 12 will be admitted free of charge.

CATERING

The food vendors will be on site to ensure you're refuelled at the end of Day 1 and ready to tackle Day 2. See race pack for full Food Truck Menu.

FIREWOOD

Campers are prohibited from collecting firewood from natural vegetation. Firewood will be provided for sale at the campsite for \$20.00. Spectators and competitors will be encouraged to use alternative fuels, eg. gas, diesel fuel heaters.

CAMPSITE RESTRICTIONS

The organisers reserve the right to immediately remove any person behaving in a disorderly or intoxicated manner from the Boral Campsite. The use of glass is limited to designated areas.

NOTE: Entry to the campsite is at your own risk. No liability for damage or loss of personal items or equipment will be accepted by the event organisers or their agents.



helloworld is the official travel agent of the Avon Descent

If you are looking for accommodation or car hire while competing in the Avon Descent contact helloworld now! Quote **AVON** and we will receive a commission on your booking.

Phone **61-8-9343 9000** or

Visit **agents.helloworld.com.au/helloworld-alexander-heights**

2016 AVON DESCENT RACEHUB

Need to find your race grid number?

Feel like a delicious meal?

Time for a post-race massage?

Come and visit the Cobbler Pool Campsite RaceHUB – your handy one stop shop for all official Avon Descent information for competitors, support crews and spectators.

What can you expect to find at the RaceHUB

Official Race Timing Information – Day 1 and Day 2

Avon Descent Official Merchandise

Social Media Hub

First Aid

Coffee Vendors

Massage Therapists

A wide range of gourmet food trucks

Kids Zone

RaceHUB Opening Hours

FRIDAY 5 AUG, 08:00 – MIDNIGHT

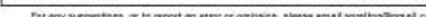
SATURDAY 6 AUG, 08:00 – MIDNIGHT

SUNDAY 7 AUG, 08:00 - MIDDAY

The RaceHUB is located at the centre of the Cobbler Pool Campsite and will host all official Avon Descent race functions for 2016.

**LOOKING FORWARD TO SEEING
YOU AT THE 2016
AVON DESCENT RACEHUB!!**





TRIBUTE TO SUE QUICK



Champion paddler Sue Quick lost her life on the Blackwood River in January this year.

Sue was a much loved member of the Ascot Kayak club and a regular Avon Descent competitor.

Sue's partner Darryl Long was with her on the river that day. "She was very enthusiastic and committed and had no fear in the rapids," said Darryl.

She loved her white-water boats [kayak with no rudder] and achieved a big Avon Descent goal in 2015 when she took out the title for fastest female single.

Sue's commitment and contribution to her sport will now be commemorated through the Avon Descent with the prize for the fastest female paddler carrying her name.

Her achievement last year was even more remarkable considering it came after a relatively short history in the event, which started with a short plastic and not quite making it in 2010. She was not intimidated by what looked like being an ultra-low river. Her plan was simple: "I'll wear my running shoes and just run with the boat".

There was a huge turn-out to farewell Sue at a memorial gathering at Ascot Kayak Club in January. Most of the Perth paddling community came together in a "Paddle-Out" with her family and Darryl leading a procession up the river and back past the club as a special tribute.

Sue's dedication and love of competition will no doubt serve to inspire many paddlers into the future.

/ SAFETY BRIEFING

All Important safety information will be briefed to competitors at the compulsory safety briefing at scrutineering (see scrutineering info).

RED

STOP

Do not proceed beyond this point.

BLACK

DISQUALIFICATION

Leave the water Immediately

**ORANGE
WHITE**

CAUTION

Obstruction ahead.
Caution to be used in area.

WARNING

FLAGS WILL BE ISSUED ALONG THE LENGTH OF THE RIVER. DUE TO THE CHANGE OF WATER LEVEL, THE LOCATIONS OF VARIOUS FLAGS WILL CHANGE ON THE DAY. IT IS IN THE COMPETITOR'S INTEREST TO BE FULLY AWARE OF FLAG COLOURS AND MEANINGS.

Be safe around the railway this Avon Descent



Trains continue to operate as normal over the Avon Descent weekend; please be extra vigilant around the railway. Whether in a vehicle or on foot, only cross the railway line at designated crossings.

- Obey stop signs at level crossings
- Follow instructions from Brookfield Rail employees
- Between Lookout Rapids and Bells Rapids section of the course, competitors must ONLY exit from the Walyunga National Park (right-hand) side of the river
- Speed limit on Rail Access Road is 20km/h
- Rail Access Road is one way ONLY (except emergency vehicles)
- Overtaking on Rail Access Road is NOT permitted
- Vehicles are NOT to be stationary in middle of Rail Access Road
- Display Valley Event Sticker clearly on windscreen.

With our freight rail network running through the Avon Valley, Brookfield Rail has been a proud partner and supporter of the Avon Descent for over 30 years.

www.brookfieldrail.com

**Brookfield
Rail**



FINISH LINE

DAY ONE

The tough 52km stretch will come to an end at Boral Cobbler Pool Campsite, West Toodyay. Competitors will battle the Ti Trees and reach the finish line, greeted by sponsors, VIPs, spectators, support crew and fellow competitors. Once crossing the finish line, competitors will exit through the finish chute and put their craft into the Pit Area ready for Day 2.

DAY TWO

Day 2 will see competitors tackle 72kms of challenging river, with the final 30km a flat water sprint to the Finish Line at City of Bayswater's, Riverside Gardens. Spectator's access parking will be via King William and Slade Streets, whilst support crew access is Riverside Gardens via Milne Street. Please follow directional signage and following parking marshal's directions. Only vehicles with 'Support Vehicle' stickers attached to the top front driver's side of the windscreen will be permitted to park here.

PADDLE CRAFT PICK UP INFORMATION

Retrieval of boats will occur from the boat/craft holding area, which will be fenced off from the public. To reduce congestion, 2x support crew will be permitted to assist with retrieval of their competitor's craft from the holding area and take it to their vehicle.

POWER CRAFT PICK UP INFORMATION

Power craft will exit the river at the ANA Rowing Club approximately 400m past the finish line on the right hand side of the river. Power boat support crew should load the boat on their trailer and clear the exit point so other teams can utilise the space. Strictly no power craft is to be extracted at the finish line point.

SUPPORT CREW AND SPECTATORS

Riverside Gardens – access via Milne Street Bayswater, follow directional signage, and obey directions of officials – the competitor/support crew parking area will be Riverside Gardens West, Bayswater. Please follow the signs and directions of staff



to the allocated parking area. Strictly ONE vehicle per entry is permitted, with the Support Crew sticker clearly visible.

POST-RACE SCRUTINEERING

All prize winning craft may be scrutineered following the event and prior to presentations. This will be conducted at race end – Sunday 7th August. The top three place getters of the 10hp Classes (9 motors) will be scrutineered at the finish line.

/ 2015 WINNERS



**2015 10hp Dinghy 1st Place
Brent Dunbar & Tom Hodgkinson**

**2015 Single Kayak
1st Place Brendan Rice**

/ SPIRIT PADDLE INTERSTATE CHALLENGE

This year's Avon Descent is going to be as exciting as ever with the introduction of the new Spirit Interstate Challenge. Four teams comprised of some of the best paddlers around Australia will compete in the interstate Challenge during this year's Avon Descent.

MEET THE STATE TEAMS

WA

Michael Baker (Singles) holds two records on the river for the fastest plastic ski time in 2008 and for being the youngest ever solo winner in 2004. He has won 4 Avon Descent titles and has been a world ranked top 10 Ocean racer.



Josh and Sam Maurice (Team of 2): Last year's winner of the Duo, they are looking to tackle the challenge again this year in a much more competitive field. Their local knowledge will play a big part but also their surf lifesaving background will set them up as it already has with the fitness to be extremely competitive on the flat sections. The only team of brothers on the water this year this team will be one to watch.



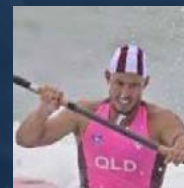
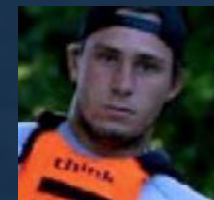
Factory Direct
6 Kingscote Street, Kewdale WA 6105

Australian  Made

Michael Baker
 +61 477 070 188
 info@spiritpaddle.com.au

QLD

Mackenzie Hynard (Singles): Currently one of the top 10 ocean racers in the world and has just recently returned from competing on the West Coast of Canada, he is also a member of the National Ocean Racing Team.

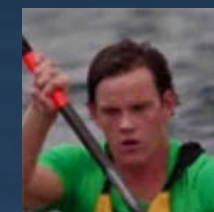


Tanyn Lyndon/Pat Norton (Team of 2):

Tanyn has been a professional Ironman for a number of years, tackled the Molokai Board Race in Hawaii and been one of the greatest Junior Ironmen of all time. Pat is speed personified, if you looked up speed in the dictionary there would be a picture of Pat Norton. He has represented Australia as a junior kayaker, and was runner up for The World Single Ski Title in 2010.

NSW

Joey Hall (Singles): Finished in the top 5 of this year's Hawaiian Molokai race, considered one of the toughest in the world. What scares people about Joey the most is his age and the room for improvement that comes with it. He could realistically be standing on top of the podium come Bayswater Sunday afternoon.



Wes Berg/Ben Carberry (Team of 2): Wes Berg is a 20 year veteran of The Professional Ironman Series, one of the best watermen in the world and coach to some of the best athletes on the planet. Ben Carberry is one of the rising stars of Surf Lifesaving and took home a number of medals at this year's Australian Surf Lifesaving Championships and enjoyed a highly successful rookie year on the Kellogg's Nutri Grain Ironman Series.

South Australia

Sean Lohse (Singles): Sean is a Junior World Sprint Kayak medallist and is touted as a future Olympian. Sean will in fact be flying straight from World Championships to represent South Australia in this year's Avon Descent.



Jack Martin/Tom May (Team of 2): The two best junior paddlers in South Australia, this year's Avon is set to be a monster challenge for the two fresh out of high school 18 year olds. What they lack in experience though they will make up for in heart and youthful enthusiasm.

To learn more about the Interstate challenge and the competitors go to:



facebook.com/avondescent/
facebook.com/spiritpaddlebaker/

/ ACT BELONG COMMIT AVON DESCENT SUPPORT UNIT



The Act Belong Commit Avon Descent Support Unit (ADSU) is a dedicated team of volunteers specifically focused on the safety of everyone involved in the Avon Descent. The ADSU is funded by Healthways under the Act, Belong, Commit program and we provide our members with specialist training to ensure a safe and fun event for all.

Our training begins in February each year with a camping trip down in Collie, using the water release from Wellington Dam to provide our swift water environment. Our training is based on nationally and internationally recognized standards which we adapt to suit the Avon Descent environment. The race weekend is a very busy, but exceptionally enjoyable weekend which relies on the continued commitment of the volunteers in the Rescue and Recovery teams to perform at their very best.

We all hope you enjoy your race, and we look forward to a great event!

/ SIMON LALOR

Manager, Act Belong Commit Avon Descent Support Unit

How did you get involved with the Act Belong Commit ADSU?

I had been driving rescue boats at Cottesloe Surf Life Saving Club for a few years and was asked by the Manager at the time if I would like to try driving a boat in swiftwater. I was 20 years old at the time and a bit of a thrill seeker so I jumped at the chance and haven't looked back!

What roles have you performed for the Act Belong Commit ADSU over the years?

I spent a few years as either a Rescue Boat Driver or Rescue Swimmer before taking over the Boats Co-ordinator role for a couple of years. Then I became a Team Leader for a number of years before taking on the Rescue Co-ordinator role in 2014 and 2015. Now this year I'm the ADSU Manager working with a great team of people who I'm fortunate to not only work with, but to call good friends too.

What's the best part of being in the Act Belong Commit ADSU?

There's too many to list really! But ultimately I'd have to say the people I've met along the journey have been the best part. We've got such a diverse range of people that make up the Act Belong Commit ADSU, and seeing everyone come together to make sure we all get home safely at the end of the race has been great to watch for so many years.

Most challenging experience?

Getting out of a super warm sleeping bag at 4am on Sunday morning of race weekend! Only to put on a wet and cold wetsuit and stand by the river again. I'm not sure if it's dedication or lunacy that makes us do it, but we keep coming back for more each year so it must be fun right?!

Who works hardest – rescue teams, recovery teams or the sweep boat crew?

At different times of the day, each of them do. But, luckily, each of them also have their fun times during the race. And the fun times always outweigh the hard times.

VOLUNTEER FOR HEALTH AND HAPPINESS

Volunteering provides the opportunity to feel part of the community and meet like-minded people with similar interest and goals. This gives us a sense of belonging which helps us keep mentally healthy. Whatever your reasons for volunteering, it is clear that engaging in volunteer work improves self-esteem, confidence, provides us with a sense of achievement and greater control over our lives. All these things contribute to good mental health.

The Avon Descent is underpinned by two pillars -the competitors and the volunteers. The pinnacle of the volunteers is the Act Belong Commit Avon Descent Support Unit. Partnering with Act Belong Commit is a great synergy as both organisations embody the Act-Belong-Commit message through participation and volunteering

- Kevin Harrison, Chairperson of the Avon Descent for 18 years

One thing all volunteer groups have in common is the fantastic culture of the people within them. Volunteers are a very special group of people who give their time for the betterment of society. I'm privileged to lead a group of volunteers who brave freezing cold conditions to ensure every competitor in the Avon Descent makes it home to their families safely. In return for volunteering we all gain new skills and make some wonderful friendships along the way.

- Simon Lalor, Act Belong Commit ADSU Manager,
Volunteer with the Act Belong Commit ADSU for 15 years



AVON RIVER FESTIVAL

Minson Avenue, Northam- 4pm Friday, 5 August 2016

IT'S ALMOST TIME FOR NORTHAM'S BIG NIGHT IN THE PARK! BRING THE FAMILY AND HEAD ON DOWN TO BERNARD PARK FROM 4PM.

STREET PARADE
MARKETS
FOOD STALLS
KIDS ZONE
STAGE SHOW- MURPHY'S
LORE
SIDESHOW ALLEY
RIDES FOR ALL THE
FAMILY
GAME-ZONE
SCIENCE OF SPORT
EXHIBITION
ROVING CARNIVAL
ENTERTAINMENT
LIVE FIRE & RESCUE
DISPLAY
LIVE BMX DISPLAY
FIREWORKS FINALE



PARKING WILL BE AVAILABLE THROUGHOUT NORTHAM FOR THE EVENING OF THE AVON RIVER FESTIVAL. TRANS WA WILL BE RUNNING A SPECIAL EVENT TRAIN FOR THE OCCASION (SEE TIMETABLE). CONTACT NORTHAM VISITOR CENTRE FOR DETAILS.

	Inward Journey		Outward Journey	
Midland	2.00pm	5.50pm	Northam	10.00pm
Toodyay	2.55pm	6.45pm	Toodyay	10.20pm
Northam	3.20pm	7.10pm	Midland	11.18pm



NORTHAM VISITOR CENTRE
P: 9622 2100
E: EVENTS@NORTHAM.WA.GOV.AU
F: WWW.FACEBOOK.COM/VISITNORTHAM

Please note that this is a smoke-free event, and that dogs will not be permitted



Free family
events

Family Fun Days

5 AUGUST TO 7 AUGUST 2016

Visit perthtourism.com.au

Brought to you by your local government
and supported by the EMRC and Lotterywest



What are your weekend plans?

With some of the best bicycle trails in Western Australia, Perth's Eastern Region is the perfect place to get outdoors and back on your bike!

Bought to you by the local governments of Perth's Eastern Region and supported by the EMRC.

Visit perthtourism.com.au



FREE FAMILY EVENT!

CITY OF SWAN PRESENTS

Avon Descent Festival

2016

FISHMARKET RESERVE, GUILDFORD SUNDAY, AUGUST 7

10AM TO 3PM WWW.SWAN.WA.GOV.AU/AVON

AVON DESCENT

FREE EVENT

CITY OF BAYSWATER

AVON DESCENT FINISH LINE

FAMILY FUN DAY

11am - 5pm SUNDAY 7 AUGUST
Riverside Gardens, BAYSWATER

Enquiries: Events Team 9272 0622
www.bayswater.wa.gov.au/events #avondecenters

lotterywest supported

AVON DESCENT

CITY OF BAYSWATER
 The Garden City - Quality Lifestyle

Facebook Twitter



AVON DESCENT

CITY OF BELMONT

AVON DESCENT FAMILY FUN DAY

SUNDAY, 7 AUGUST 2016 – 11:30AM TO 3:30PM
GARVEY PARK, FAUNTLEROY AVENUE, ASCOT

- Free kids activities
- Live race commentary
- Free Mix 94.5 Gourmet Grill
- Junior Sports Expo
- Helicopter rides

City of Belmont residents
 bring your Opportunity Card for free offers (limits apply).

lotterywest

Visit www.belmont.wa.gov.au or phone the City of Belmont on 9477 7248 for further information.
 This smoke free and alcohol free event is proudly brought to you by the City of Belmont – the City of Opportunity and supported by Lotterywest.
 TravelSmart – why not cycle, walk or take public transport?






TOODYAY INTERNATIONAL FOOD FESTIVAL 2016

FREE FAMILY FUN DAY!
Stirling Park & Duidgee Park
Saturday 6 August 10.00 am- 4.00 pm

Come and celebrate the 2016 Avon Descent at the twelfth annual Toodyay International Food Festival. Held on the banks of the river, we invite you to combine all of the thrills and spills from the race with delicious international cuisine and a fantastic entertainment line-up.

Proudly brought to you by

toodyay **AVON DESCENT** **lotterywest supported**

Facebook
 LIKE TOODYAY INTERNATIONAL FOOD FESTIVAL ON FACEBOOK




FAMILY FUN DAYS

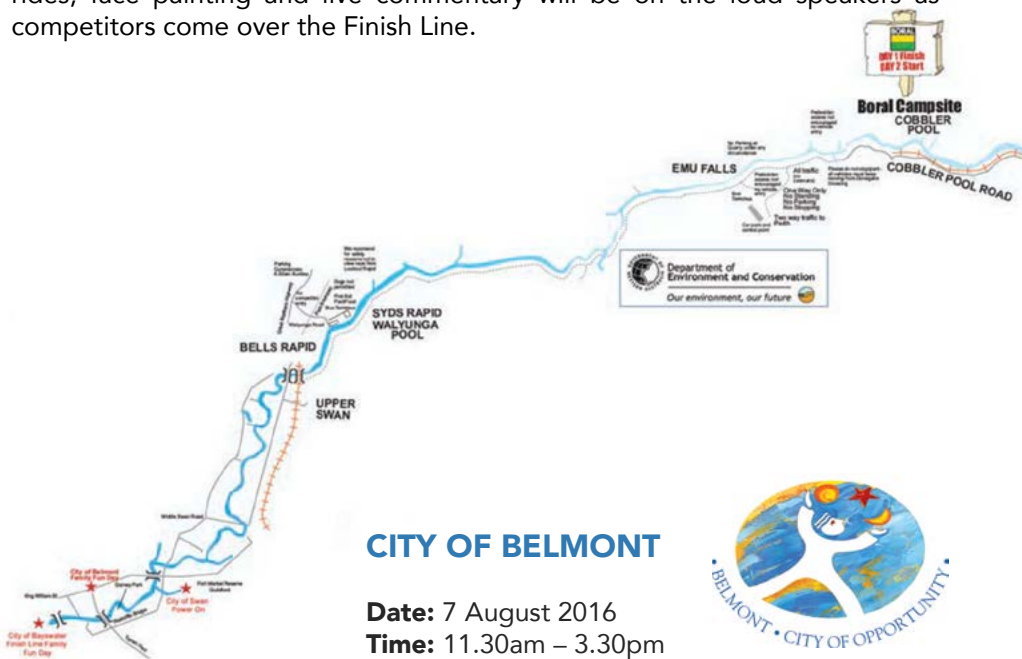
SPECTATOR LOCATIONS



CITY OF BAYSWATER

Date: Sunday 7 August
Time: 11am – 5pm
Where: Riverside Gardens – Bayswater

Nothing beats an exciting finish! Join support crews and spectators to welcome competitors over the Finish Line at the City of Bayswater Avon Descent Finish Line Family Fun Day. Enjoy a sensational FREE day out for the whole family! Bouncy castles, children's rides, face painting and live commentary will be on the loud speakers as competitors come over the Finish Line.



CITY OF BELMONT

Date: 7 August 2016
Time: 11.30am – 3.30pm

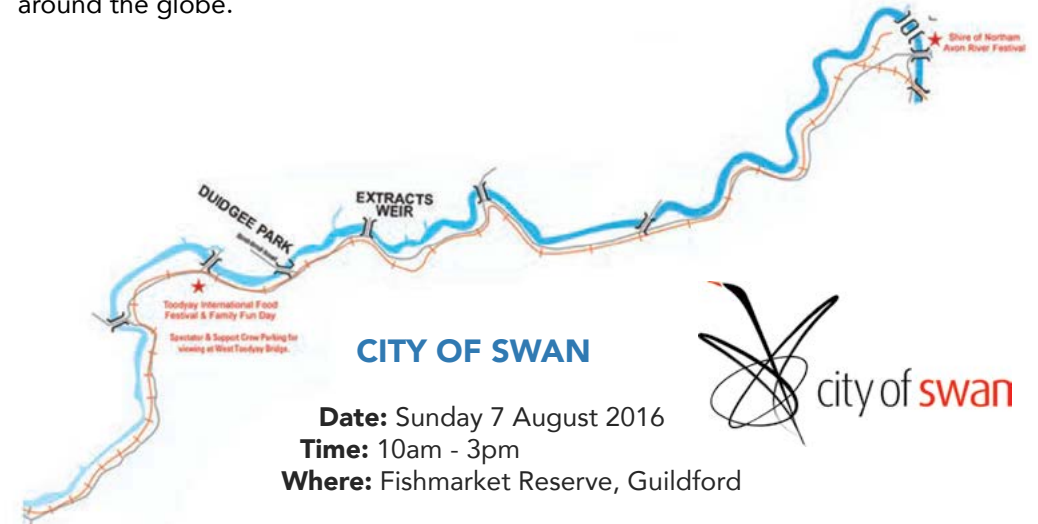
Get up close to all of the action at the City of Belmont FREE family fun day. Enjoy live race commentary on the banks of the Swan River, FREE children's activities, a FREE Mix 94.5 Gourmet Grill, the Junior Sports Expo, bicycle maintenance, helicopter rides and much more. If you are a City of Belmont resident with an Opportunity Card, take advantage of your free and discounted offers during the day (limits apply).



TOODYAY INTERNATIONAL FOOD FESTIVAL

Date: Saturday 6 August 2016
Time: 10am - 4pm
Where: Stirling Park & Duidgee Park, Toodyay

Combine the thrills and spills of the Avon Descent with dozens of mouth-watering international cuisine stalls and free family entertainment all on the banks of the Avon River. The main stage will come to life with a diverse range of performers inspired from around the globe.



CITY OF SWAN

Date: Sunday 7 August 2016
Time: 10am - 3pm
Where: Fishmarket Reserve, Guildford



The City of Swan Avon Descent Festival returns with gusto! Join us to cheer on the competitors from the amazing riverfront vantage point and enjoy a packed program of onstage entertainment from Ricochet Circus, Josephine and Goggles and Belle Harvey. Meander around the reserve to experience the Artonomy Art Trail, circus workshops, roving entertainment, amusement rides, craft activities, artisan markets and gourmet food truck fare or simply lay back on a picnic rug and soak up the atmosphere. There is something for all ages and all entertainment is completely FREE!



SHIRE OF NORTHAM

Date: Friday 5 August 2016
Time: 10am – 3.30pm
Where: Bernard Park, Minson Avenue, Northam

Celebrate the excitement of the start of the world's greatest white water event at the Shire of Northam's Avon River Festival. There will be entertainment by Murphy's Lore, a street parade, amusements and rides, free family fun zone, largest fireworks display in the Avon Valley and food.



Withdrawn Craft Day 1

Should you be withdrawn from the race, competitors will be taken to the roadside and Support Crew contact is attempted.

Should you not get in contact with your Support Crew, craft and competitors will be taken to Cobbler Pool. Withdrawn competitors should SMS their race ID and withdrawal location to

0447 199 851



STAGE 1

STAGE 1: Northam to Katrine

17km | Grade 1 | from 8.00am

Start Marshalling Area: Streets adjacent to and including Broome Terrace will be closed on Saturday morning. Follow signage to designated parking areas. There is ample parking on the town side of the Avon River.

Support Crew and Spectators

Northam: Follow directional signage to designated parking areas. Please do not park in the gravel area near Northam Weir. When leaving the Town of Northam, follow signage to Toodyay. Follow Newcastle Road – Toodyay Road and turn right to access Katrine Bridge. Please slow down when approaching Katrine Bridge as there are many pedestrians in this area.

Katrine: The scenic drive on the north of the river is closed. Access is not permitted to Glen Avon Rapid. Glen Avon Rapid will be patrolled and there is strictly no access.

Teams Changeover #1: Katrine Bridge is the first change over point for teams. The changeover area is on the right hand bank.

STAGE 2: Katrine to Newcastle Bridge

15km | Grade 1 | from 8.10am

The hazard of Glen Avon Rapid is 2km downstream from Katrine Bridge, followed by 7km of coffee rock with negotiable channels. Sinclair's Crossing, beneath Dumbarton Bridge, creates a hazard in low to medium water. The next challenge is Extracts Weir. This 3m high rock weir provides one of the most spectacular sights on the river. Many competitors will portage here – dependant on the river levels.

Support Crew and Spectators

From Katrine: leave Katrine heading north along the Northam Toodyay Road and follow to Extracts Weir. Extracts Weir: Please do not park on the road verges. A sanctioned parking area is provided. Parking fee is payable by spectators. ONE Support Crew vehicle per team will be provided free access with the Support Crew sticker on the vehicle.

Toodyay: Ample parking is available surrounding Duidgee Park and checkpoint 2 is located at Duidgee Park beneath Newcastle Bridge. A checkpoint information board with race updates is also available here.

Teams Changeover #2: Duidgee Park is the second changeover point for teams. The changeover area is on the left hand bank.

STAGE 3



Stage 3: Newcastle Bridge to Wetherall Reserve

9km | Grade 1 | from 8.30am

Toodyay Checkpoint can be difficult for craft and Power Craft should keep to the right in all but the highest water when passing through. Coffee rock prevails for the next 2.4km where you will reach the Railway Bridge. Just 500m past this bridge is Toodyay Rapid, a small drop with many granite boulders. The course is then a mainly shallow and wide river to West Toodyay Bridge. The riverbed from West Toodyay to the Ti Trees is mostly sand with some gravel offering accessible channels.

Support Crew and Spectators

From Toodyay: Support Crews should leave via the railway subway and turn right at the T-Junction at Harper Road. Harper Road becomes Julimar Road and the railway line will be on your right.

West Toodyay: limited parking is available adjacent to the bridge, or on West Toodyay Oval, 50m up Julimar Road towards Toodyay. To increase safety, please do not park on the Julimar Road Bridge.

Wetherall Reserve: Continue along Julimar Road and a short distance after you cross over the railway line, turn left into River Road (just before the West Toodyay Bridge). Proceed along River Road approximately 1.5km and Wetherall Reserve is on the right. Teams Changeover #3 | Wetherall Reserve at the start of the Ti Trees is the third changeover point for teams. The changeover area is on the left hand bank.

Stage 4 – Wetherall Reserve to Cobbler Pool & Finish of Day 1

11km | Grade 1 | from 8.40am (Cobbler Pool from 9.00am)

Channels exist in the Ti Trees but the frustration comes in trying to find them. Albys Ford is reached just after entry to the Ti Trees. Water levels play a great part in the ease or difficulty with which the Ti Trees may be negotiated. Should competitors be caught in the Ti Trees at nightfall they must head for the left bank only and report to a race official. Approximately 200m after Leatherhead Rapid, look out for the finish line indicating the end of Day 1 and a well-deserved rest!

Support Crews and Spectators

River Road: Please take caution on River Road as it is a gravel road. Turn right out of Wetherall Reserve parking area and ensure your vehicle doesn't block other traffic on this gravel road. Turn right at Jimpering Brook Bridge onto Cobbler Pool Road and head toward the overnight campsite. NO dogs or other pets allowed. Alternate access to River Road is via Lovers Lane. If coming from Perth turn left off Toodyay Road into Lovers Lane, care should be taken 5.9km along where Jimpering Brook crosses Lovers Lane as it may be hazardous in very wet weather, when water levels are high. Travel for a further 1.4km turning left into River Road.

Boral Cobbler Pool Start/Finish: due to the number of people and vehicles it would be appreciated if movement of vehicles within the area is kept to a minimum. Major roads within the campsite are one way only so please obey directions. Police and security personnel will be patrolling the area.

STAGE 4





STAGE 5

Stage 5: Cobbler Pool to Emu Falls 8km | Grade 2/3 | Paddlers from 7.00am, Power Craft from 12.00pm

The worst of the Ti Trees beckons competitors at the start of Day 2. Rocks and misleading channels are found right through to Possetts Ford. Depending on the water level, large boulders immediately above the Ford can be a bone jarring slide or virtually non-existent. Shortly after Possetts Ford is Super Shoot. This small rapid is more dangerous than it looks and should be approached with care. The river is then open water with a few trees before narrowing dramatically to Donegan's Crossing. From Donegan's crossing there is a series of small metres of rapids culminating in the main fall of about 2m. Water funnels into one gap at the base of Emu Falls causing congestion in all but very high water. This is known as the 'Washing Machine' and should be taken with great caution. Power Craft: please note there is no refuelling on course.

Support Crews

Leaving camp, there are two available options:

1. Exit left via Cobbler Pool Road and Lovers Lane to Toodyay Road. All vehicles towing caravans must exit this way.
2. Exit right for Support Crews wishing to gain access at Emu Falls to Quarry Road. Quarry Road is one way only and no caravans are permitted. Then turn right out of the campsite and follow Cobbler Pool Road

NO STOPPING. Turn left at Quarry Road (take extreme caution when crossing the railway line) and continue for approximately 3-4km to the Emu Falls Airstrip.

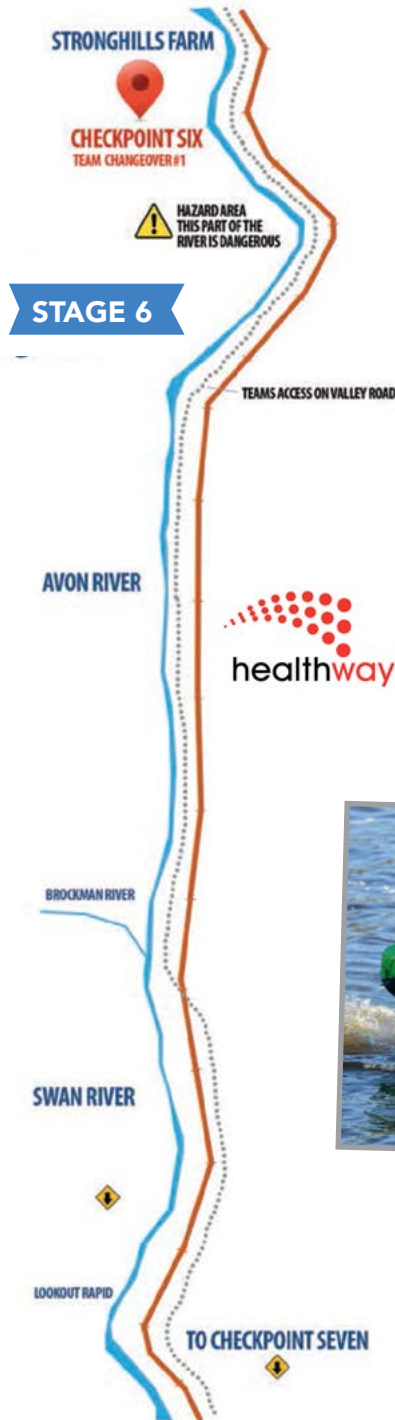
Support Crew for Teams ONLY: upon leaving Cobbler Pool, turn right out of the campsite and follow Cobbler Pool Road to the Valley Road/Quarry Road junction. Cobbler Pool Road turns into the Valley Road at this junction. Continue straight onto Valley Road where you will be stopped by a Race Official and checked for your Valley Entry Sticker.

NO STICKER = NO ENTRY.

Remember, this sticker must be in the top right corner of the front windscreen. Paddlers 2 and 3 should be in this vehicle and taken to Stronghills Farm and Bells Rapid.

Withdrawn Craft: Support Crews should report to the Emu Falls Airstrip on Quarry Road for competitors and craft that have withdrawn between the Campsite and Emu Falls.

Withdrawn competitors must SMS their race ID and withdrawal location to 0447 199 851



STAGE 6

Stage 6: Emu Falls to Stronghills Farm 10km | Grade 3 | From 7.30am

There are several rapids and small drops in this stage. Many power and paddle craft has become victim to the river in this section over the years. Support crews and spectators (except teams) will not have access to their competitors at Stronghills. The next checkpoint is at Bells Rapids. To exit Emu Falls keep heading south along Quarry Road and turn right at Morangup Road. This will take you to Toodyay Road and turn right towards Perth and the next checkpoint at Bells Rapids.

Please note: only 1 Valley Entry sticker is issued to Teams Support Crew and only one car per team is allowed access to the Valley Road as this is a private road. The speed limit is 20km/h and there is NO stopping on the Valley Road and headlights must be on. Give way to safety and emergency vehicles and stop ONLY at the designated Teams Changeover Point.

Unauthorised stoppage will result in a 10 minute time penalty.

The Valley Road is a private road and to ensure our continued use, respect must be paramount. These roads are not designed for the volumes of traffic encountered during the Avon Descent so care must be taken. Support Crews park on the roadside at Stronghills, but be sure not to block traffic. Exit along the Valley Road towards Bells Rapid.



STAGE 7

Stage 7: Stronghills Farm to Bells Bridge

21km | Grade 3/4 | From 8.30am

This part of the river is home to a number of hazards including a 140m drop through Walyunga National Park. There is a series of small rapids below the lookout. The first of the major obstacles is Championship Rapid which is low, flat and wide. In very high water it becomes a series of standing waves. A sequence of small drops takes the competitors to the big challenge of the river, Syd's Rapid. This 100 metre rapid is a mass of rock and once competitors are launched into this long gradient they are committed to its awesome power. The river is then wide open water and a few trees to Long Pool. From Walyunga Pool the river becomes very narrow and winding. The last great obstacle of the Descent is Bells Rapid. Once this white water stage is complete, the river opens out through the beautiful scenery of the Upper Swan.

Support Crew and Spectators (except teams):

continue on Toodyay Road towards Perth and at great Northern Highway turn right. Turn right into Cathedral Ave and following parking and shuttle bus directions. Bells Rapid can only be accessed via the shuttle bus.

Support Crew and Spectators must leave their vehicle at the State Equestrian Centre Parking area and use the shuttle bus provided. Parking and bus is \$10 per vehicle for all spectators. Allow a 25 minute turnaround for the shuttle bus.

Teams Support Crews: Enter via the Valley Road and follow directions of officials and park in the lower car park at Bells, extra support crew vehicles will not be permitted entry down to Bells via Cathedral Avenue. If extra support crew vehicles wish to meet their competitor at Bells they must park at the State Equestrian Centre taking the shuttle bus to Bells.

Teams Changeover #2: Bells Rapid is the second changeover for teams on Day 2. The changeover area is located on the left hand bank below the rapids.



STAGE 8

Stage 8: Bells Rapid to Middle Swan Bridge

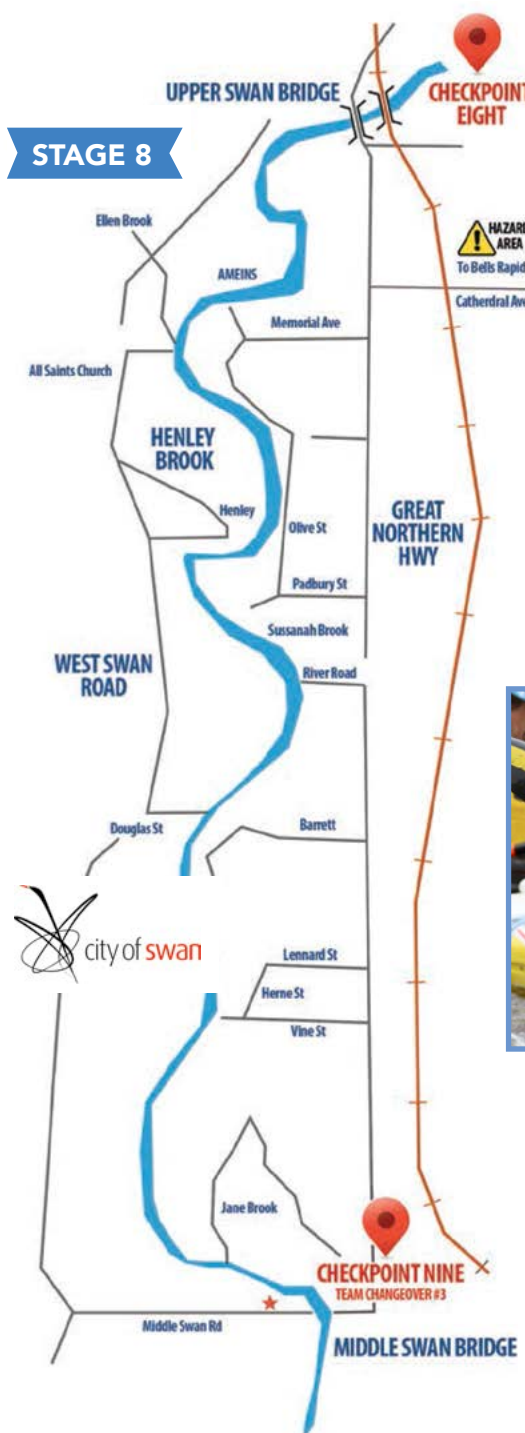
18km | Grade 1 | From 9.15am

Downstream from the Upper Swan Bridge the river gradient is slight and the channel shallow.

Competitors face 4km of Ti Trees and scrub before the river opens out into tidal waters. Ellenbrook enters from the right just before the end of the trees.

Support Crews & Spectators

Upper Swan Bridge is located on Great Northern Highway. Take care when parking and if you stop here, please ensure your vehicle is not blocking traffic. Middle Swan Bridge can be accessed via Great Northern Highway. Turn right into Middle Swan Road and after a short distance turn left (follow the signs). Head under the new bridge and park in the designated area.



Stage 9 – Middle Swan Bridge to City of Bayswater Finish Line

15km | Grade 1 | From 11.00am
(Bayswater from 11.30am)

The Power Craft enjoy the long winding open river but for paddlers, this section is often difficult or at least testing, especially if headwinds are present. In the final stage of the race, competitors have the finish line in sight and feel the elation of completing the Avon Descent in front of the large crowd gathered on the riverbank. All competitors finish at Riverside Gardens, Bayswater to an athlete recovery area and the City of Bayswater Family Fun Day.

STAGE 9



AVON
DESCENT

Cobbler Pool Campsite

what's on?
Saturday 6th

when?

9.00am

First Power Boat expected to arrive

10.30am

B BROAD Finance Post-Race Breakfast

Midday

Kids Zone Open!

12.30pm

First Paddle Craft expected to arrive

1.00pm

'The Art of Flight' - Snowboarding Documentary

1.30pm

SPIRIT PADDLE SPORTS Display and Chat session

2.00pm

Avon Ashes Cricket Game

2.30pm

Kids Zone Face Painting and Colouring-in

2.30pm

Powercraft Timed Repairs

4.00pm

Day Two Grid Positions Announced

afternoon entertainment begins!

4.00pm

Live Band- 'Band of Brothers'

4.30pm

'History of Avon Descent' - Movie

5.00pm

Dinner District opens

5.30pm

to
10.00pm

Avon Extra! Concert
Race footage
Variety Show
Fireworks
Live Band- 'Another Fine Mess'

where?

Finish Line - Cobbler Pool

RaceHUB

RaceHUB Kidz Tent

Finish Line - Cobbler Pool

RaceHUB

Spirit Tent - RaceHUB

Oval

RaceHUB Kidz Tent

Cobbler Pool Pit Area

RaceHUB

RaceHUB Stage

RaceHUB

Food Truck Alley

Main Stage

Dont Forget -

Brookfield Railway
Crossing will be closing
at 6pm

/ RACE RECORD HOLDERS

8Hp Dinghy Standard	1991 Northam To Bayswater	K Parnell G Black	3:01:32
8Hp Dinghy Sports	2008 Northam To Bayswater	J Goodbody K Goodbody	2:39:55
10Hp Dinghy Sports	2012 Northam To Bayswater	I Williamson T Williamson	2:09:26
10Hp Dinghy Standard	2012 Northam To Bayswater	A Hall M Prosser	2:09:46
Novice/Past Racer	2011 Northam To Bayswater	I Williamson T Williamson	3:49:23
10Hp Dinghy Super	2007 Northam To Bayswater	J Branson M Branson	2:28:45
6Hp Dinghy Sports	1983 Northam To Bayswater	W Mould N Jones	3:52:11
8Hp Alloy	1994 Northam To Bayswater	S Brown S Shinnick	4:02:22
Solo Dinghy	2005 Northam To Bayswater	G Barndon	4:21:28
Single Kayak - Wk1	1983 Northam To Bayswater	D Long	7:56:09
Single Kayak - Mk1		C Elliott	8:35:18
Single Kayak	1996 Northam To Bayswater	M Rodgers (L)	8:28:46
	2008 Northam To Bayswater	B Lewin	7:53:03
Single Kayak Wild Water	2011 Northam To Bayswater	D Worthy	9:27:33
		H Thorpe (L)	10:28:34
Double Kayak - Wk2 Mk2	1986 Northam To Bayswater	A Duke P Pawlow	7:48:04
Double Kayak	1996 Northam To Bayswater	P Genovesi D Long	7:14:40
Single Kayak Plastic	2000 Northam To Bayswater	D Hocking	10:55:35
		S Boladz (L)	12:20:29
Single Plastic Short	2008 Northam To Bayswater	R Goodchild	9:31:09
		A Curtis (L)	10:33:50
Single Plastic Long	2008 Northam To Bayswater	M Baker	8:07:36

/ RACE RECORD HOLDERS (Continued)

Single Plastic Long	2008 Northam To Bayswater	J Bateman (L)	9:23:48
Double Plastic	2008 Northam To Bayswater	B Ingram A Gluyas	9:22:49
Single Canadian	1986 Northam To Bayswater	W Smith	9:46:00
Double Canadian	1986 Northam To Bayswater	R Holt R Fry	8:34:55
Double Canadian	1991 Northam To Bayswater	P Kitney R Holt	9:23:04
Single Surf Ski	2007 Northam To Bayswater	J Humphrys (L)	10:33:07
	2008 Northam To Bayswater	B Sarson	7:34:20
Single Surf Ski Recreational	1999 Northam To Bayswater	S Lusk	10:46:29
		L Young (L)	12:04:15
Double Surf Ski	1996 Northam To Bayswater	D Pratt T Bird	7:13:48
Double Surf Ski Mixed	2009 Northam To Bayswater	R Jenkinson J Jenkinson	9:57:14
Powered Sundries	1990 Northam To Bayswater	B Cooper S Patterson	3:00:57
Non-Powered Sundries	1991 Northam To Bayswater	C Boocock I Wookey	8:52:53
73-76 Sundry 80-83 Mixed Dbl	1982 Northam To Perth	S Snowball J Snowball	8:21:08
Single Teams	1996 Northam To Bayswater	B Boocock D Bingham	8:44:19
Double Teams	1996 Northam To Bayswater	J Muir R Jenkinson	7:38:50
Team Pairs	2008 Northam To Bayswater	A Nesbit C Pretorius	7:30:39
	2011 Northam To Bayswater	T Stedman B Holmes	8:53:11
		K Broad J Martin (L)	10:18:38
Team of Fours	2008 Northam To Bayswater	R Baker K Jarrott M Rees J Zerbst	7:34:58
One Day Event	2013 Northam To Toodyay	N Keen	6:05:17
One Day Event	2013 Northam To Toodyay	E Beeley (L)	6:21:19

PHOTOS



Avon Descent Official Photographers



**How did your
Avon Descent go?**

We can show you!
aussiesinaction.com.au

phone 95373280
admin@aussiesinaction.com.au

Check out the all new...

**Avon
Tracker**

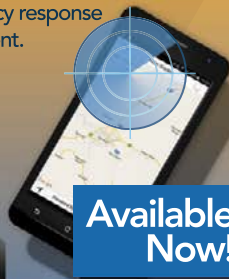
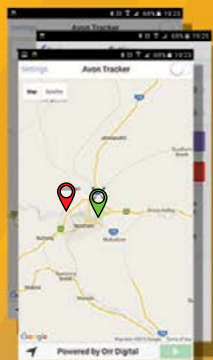
Mobile
GPS Tracking

Designed to assist
competitors with:

- Support Crew Assistance
- Rapid Emergency Response

The AvonTracker is a
FREE phone-based
solution designed to increase competitor safety
and improve emergency response
during the Avon Descent.

Utilises a phone's GPS
to provide up-to-date
positional information



**Available
Now!**



See the Avon
Descent website
for more info.

developed
by

**ORR
DIGITAL**

orrdigital.com.au

Custom RFID Solutions
Custom AV Trailers
Online Shopping
Website Hosting
App Development

michael@orrdigital.com.au

CREATE YOUR OWN WELLBEING

actbelongcommit.org.au

Keeping mentally healthy through being active is
just as easy as A-B-C: **act-belong-commit!**



act

take a walk, play a sport, go for a swim, say
g'day, fly a kite, run, ride your bike, go to the
beach, skate, work in the garden...

belong

join a sporting club, invite your mates
outdoors, organise a bbq, be more
involved in any teams you belong to...

commit

volunteer at a community event, coach
a team, enter a sporting competition,
commit to training, learn something new.

**act
belong
commit**

visit actbelongcommit.org.au





Government of **Western Australia**
Department of **Regional Development**



ROYALTIES
FOR REGIONS

We support many events in regional Western Australia!

Royalties for Regions is investing \$60 million in Tourism WA's Regional Events Program to help grow our regional areas into thriving and sustainable communities.

Regional events bring valuable promotion, vibrancy and prosperity to communities.

A map of Western Australia is shown, overlaid with several concentric circles that radiate from the center. The circles are semi-transparent, allowing the map's colors to be seen through them. The text is curved to follow the shape of the circles.

**The benefits from Royalties for Regions...
can be felt all throughout WA.**